

Large Chicken Made from Traffic Cones

Which came first, the chicken or the egg? This question has perplexed scholars forever but artist Lana Shuttleworth has created a free-standing, 8-foot tall chicken described as “whimsical, contemplative and imposing” that cleverly illustrates the riddle.

Her creation, named “Origins 2010,” is fabricated from shards of traffic cones yes, those orange, yellow and red polyvinyl fluoride devices used to guide vehicular traffic that look like a dunce or wizard -- cap. During the past 20-plus years Shuttleworth has fabricated more than a hundred wall hangings and free-standing cone creations, some of which are displayed at the JCL Barricade Company at 2334 E.8th St. in downtown Los Angeles, which specializes in traffic control.

Nicknamed “Snacker” by Shuttleworth, who muses at a possible KFC connection, the chicken sculpture was commissioned by the Armory Center for the Arts for the Madison Neighborhood Casita in Pasadena, where it has been on display for the past year. Now it is a work of art for all to see when exiting the westbound Santa Monica Freeway at the Santa Fe Ave. off ramp, where JCL Barricade is based.

“We put the chicken on a pedestal next to our flagpole,” said JCL co-owner Jim Morris, who became friends with Shuttleworth about 12 years ago with their mutual interest in traffic cones.

The hen is fabricated on a steel and plywood foundation with only recycled cone pieces on the outside. It weighs more than 300 pounds. A white traffic cone is strategically placed behind the chicken to represent the “egg.”

Of her work, Shuttleworth says

“The surface of the cone bears the evidence of life with the marring and scarring that comes from surviving a fast and relentless urban existence and that is precisely where so many of us find ourselves these days.”

Using a box cutter, Shuttleworth cuts cone shards of varying sizes and shapes, treasuring those cones offering black, gray and underbellies of pink, cream and golden yellow with varying hues that will add impressionist color.

A native of Jacksonville, Florida, Shuttleworth received her degree in fine arts from Florida State and currently is working on a sanctuary project in Ft. Myers. Her time is currently split between studios on both coasts.

Shuttleworth's work and background information can be viewed at www.shuttleworth.us.

Information on JCL Barricade Co. can be found at www.jclbarricade.com or by calling (213) 622-9775.



JCL Barricade owners Sue and Jim Morris pose underneath “Snacker” with creator Lana Shuttleworth, left.



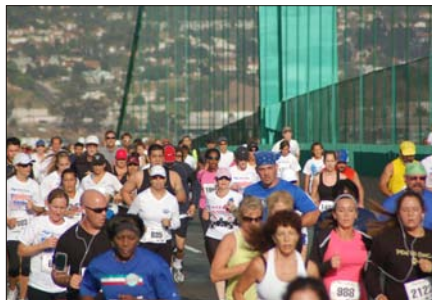
Shuttleworth was interviewed by KABC-TV when “Snacker” went on public display.

Recent & Upcoming JCL Barricade Projects

The 100th Anniversary Celebration of the Port of Long Beach this summer drew a crowd of 5,000 to see 70 interactive displays.



Belmont Shore Car Show



Conquer the Bridge



Latin American Parade

We Serve Royalty

The Duke and Duchess of Windsor – Kate and William – came to Los Angeles July 9 and the Belasco Theatre in downtown, where they were guests of honor at a British Academy of Film and Television Arts dinner honoring 42 young British filmmakers. JCL Barricade passed the required security clearances and helped to keep the crowds away from restricted areas.

The Latin American Parade and Festival was held for the third year in August on Pine Avenue in Long Beach with 1,000 participants, 15 live performances and 60 vendor booths.

Conquer the Bridge on Labor Day was the third time for this 5.3 mile run over the Vincent Thomas Bridge and back to San Pedro. LAPD Harbor Area Booster Club was the official non-profit for 2011 with a portion of the proceeds benefitting youth programs.

The International City Bank Marathon drew another record crowd of 25,000 participants who ran from downtown to California State University Long Beach and back on October 7. This was the 28th annual event, with

barricades, signs, cones and electronic message boards provided by JCL Barricade.

Haute Dog Howl'oween Parade on Livingston Drive in Long Beach on

October 30 was barricaded by JCL as about 500 dogs, cats and even pigs paraded in their "trick or treat" costumes. This 11th annual event is produced by Justin Rudd's Community Action Team (CAT) to benefit children, animals and the environment.

Halloween Carnaval -- Hundreds of thousands of Halloween revelers flocked to Santa Monica Boulevard in West Hollywood for the 2011 West Hollywood Halloween Costume Carnaval on Halloween night, Monday, October 31, 2011. One of the world's largest Halloween celebrations, the West Hollywood Halloween Costume Carnaval was held from 6 p.m. to 11 p.m. along Santa Monica Boulevard from Doheny Drive to La Cienega Boulevard.

The 15th Annual Veteran's Day Parade was barricaded by JCL on Nov. 5 on Atlantic Ave. between Harding and 56th Streets in Long Beach with the theme "A Salute to Those Who Served." The parade grew 30 percent larger than the previous year with 15 marching bands.

The Dana Point Turkey Trot was held on Thanksgiving, Nov. 24, with 10,000 participants. The race benefits the Dana Point 5th Marine Regiment Support Group and the Second Harvest Food Bank of Orange County.

Belmont Shore Christmas Parade, Long Beach, December 3, 6-9 p.m. This 29th annual event attracts about 50,000 people each year spread over 15 blocks of 2nd Street. There are more than 100 marching units, bands and floats at the parade. Details at www.belmontshore.org.

The Holiday Half-Marathon in Pomona is scheduled for Sunday, Dec. 11 in Pomona and is expected to include more than 3,500 run-walk-bike participants in this third annual event.

This is a sampling of the many events that JCL Barricade Company services in behalf of movie studios, cities, construction companies and special event organizers. For additional information, visit our website, www.jclbarricade.com or call (213) 622-9775.